

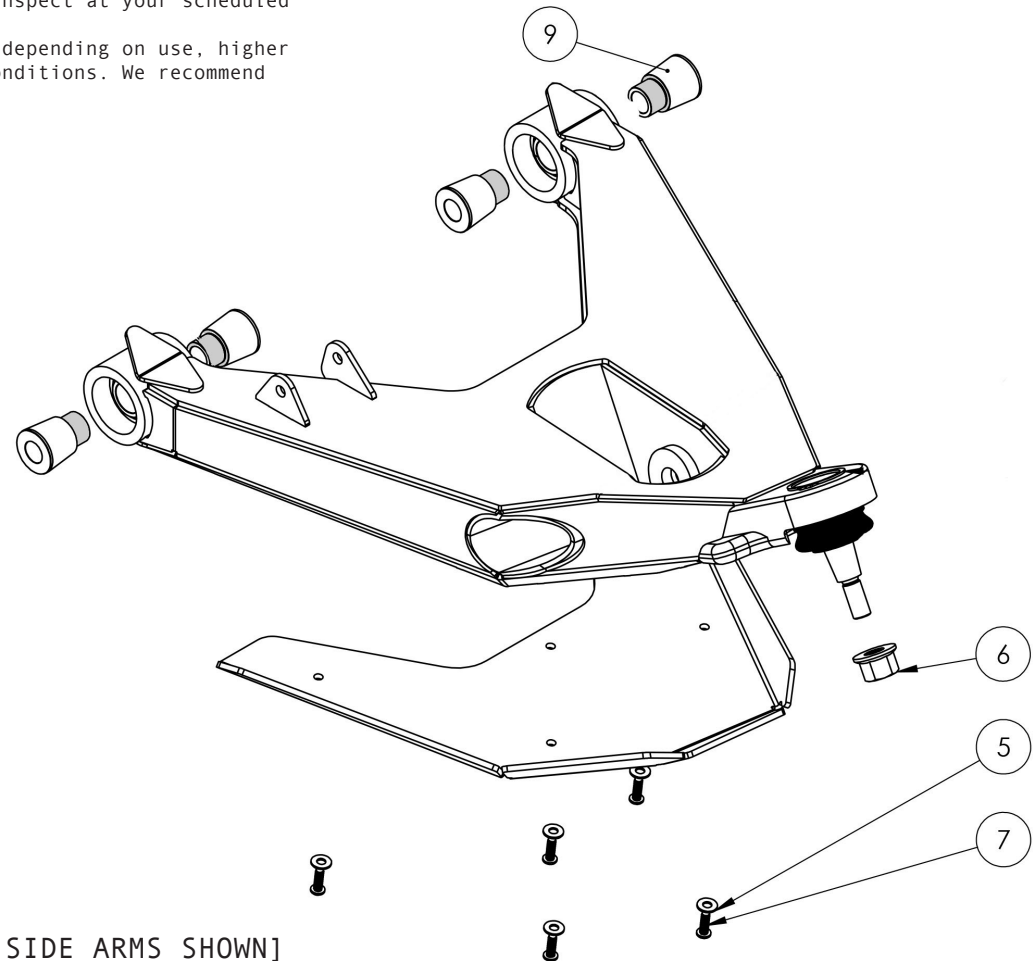
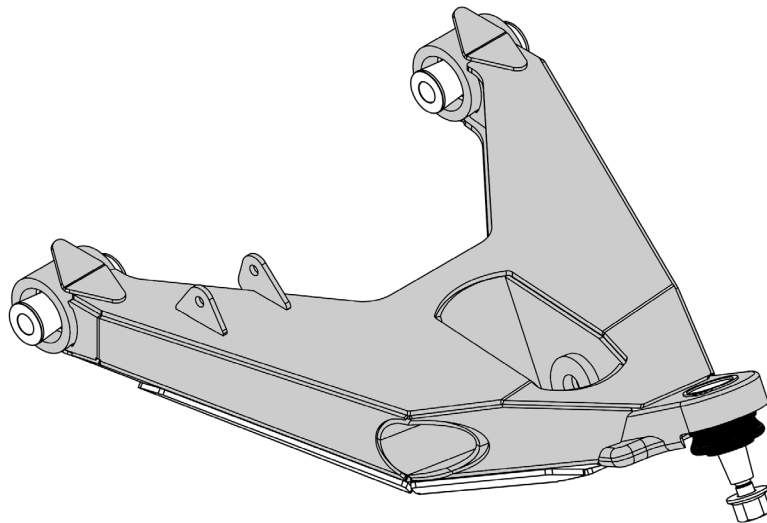
Thanks for purchasing our performance lower control arms. If you are not installing these yourself, have a qualified shop do so. These arms are designed to be used with stock OEM spindles or Camburg performance spindles. Check the parts list to make sure you have every component prior to installing. Camburg Engineering has made every attempt to insure you receive the highest quality components in the most complete manner. This is a guide to help you through the process with some recommended torque specs & notes. It's your responsibility to ensure parts are being installed correctly using the correct tools and procedures. For step-by-step instructions, refer to a Ford or Haynes/Chilton service/repair manual.

Important Installation Notes:

- Factory wheels will not work with these; you need aftermarket wheels with 4.75-5.00" of backspacing.
- The front sway-bar is eliminated with these lower control arms and needs to be removed.
- Re-uses lower OEM shock hardware and frame pivot hardware.
- Apply anti-seize to uniball spacer surfaces (shaded gray in diagram)
- Use RED loctite on all fasteners > 1/4" dia.
- Use BLUE loctite on 1/4" skid plate bolts.
- Inspect and re-torque all hardware and components after the first 500 miles, inspect at your scheduled maintenance intervals and whenever using the vehicle off-road.
- We recommend greasing the ball-joints 2-3 times per year or every 5-8k miles depending on use; higher frequency lubing may be required when used off-road and/or in wet/snow/mud conditions. We recommend using a high temp. lithium complex #2 synthetic grease.

Recommended Torque Specs:

- Lower Ball-joint Nyloc Nut = 115 ft/lbs.
- Lower Arm Frame Hardware = 260 ft/lbs.
- Lower Shock Hardware = 400 ft/lbs.
- 1/4" Skid Plate Bolts = 10-15 ft/lbs.
- Outer Tie Rod Nut = 85 ft/lbs.
- Ball-joint Upper Arm Nut = 85 ft/lbs.
- Uniball Upper Arm Nut = 125 ft/lbs.



[DRIVER SIDE ARMS SHOWN]

ID	PART NBR	DESCRIPTION	QTY
		DRIVER SIDE LOWER ARM	1
		PASSENGER SIDE LOWER ARM	1
		DRIVER SIDE LOWER ARM SKID PLATE	1
		PASSENGER SIDE LOWER ARM SKID PLATE	1
9	960077	LCA UNIBALL FRAME SPACER	8
5	950010	1/4" SAE GRADE 8 ROUND WASHER	10
7	950140	1/4-20 X 1" GRADE 8 HEX BOLT	10
6	950137	M14 X 2.0 NYLOC FLANGED NUT	2
	030017	CAMBURG 8.5" STICKERS	4